

CLIMECON

LINE

Residential valves





LINE

CLIMECON

Stylish valves add ventilation as a part of the interior decor

Developed in cooperation with professionals in interior desing,
industrial design and Climecon's ventilation experts.

LINE

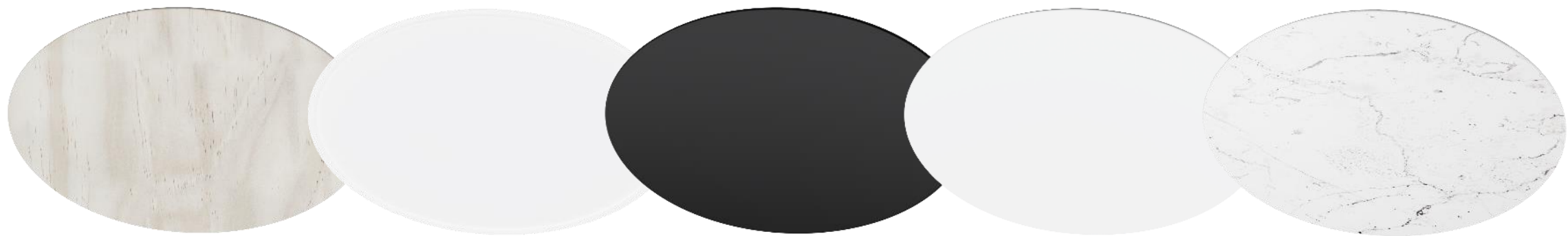
Finished design guarantees a high-class indoor atmosphere

LINE has either a round or a square-shaped visible deco parts. They are available in new materials within the ventilation field, in Accoya pine and opal glass, additionally to paint coated steel.

What more, the user can attach a front plate of desired material as the visible part of the valves with an attachment part specifically designed for customization.



LINE collection



Select the visible deco part out of
new materials in ventilation:
Sustainable Accoya® pine or elegant opal glass

Blend in or accentuate from the
interior decor:
Available in round or square shaped, paint
coated steel in matte black or matte white

Customize for your needs:
Attach a desired front plate with a handy
customization part



Attachment part for customization

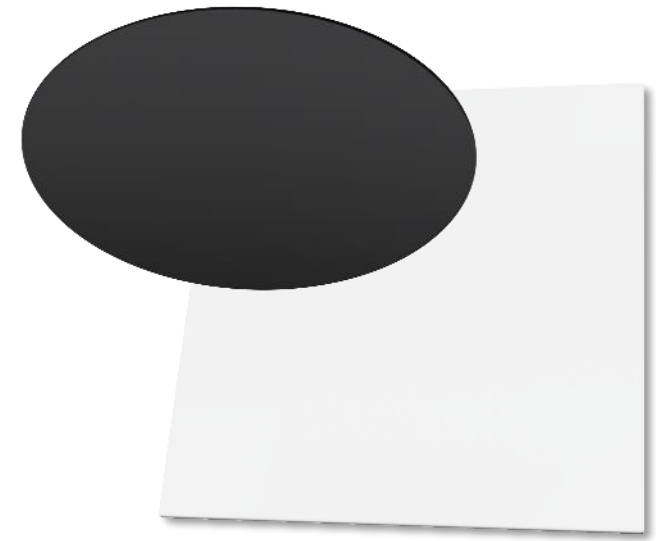
- LINEb is an attachment part specially made for customization that allows usage of a desired material on the cover of the valves





Deco parts out of paint coated steel in matte black or white

- Blend in with the surfaces or accentuate as an element of the interior design
- The high-class surface treatments gives the products a finished look
- Dirt-repellent coating makes LINE valves easily cleaned



LINE

High-class ventilation for residential locations

- For supply and exhaust air, 100 and 125 mm
- For ceiling or wall mounting
- With a round or a square-shaped deco part
- Air flow direction into 270° and 180°
- Pre-adjusted valves – quick commissioning





LINE

Quick installation with preadjusted valves

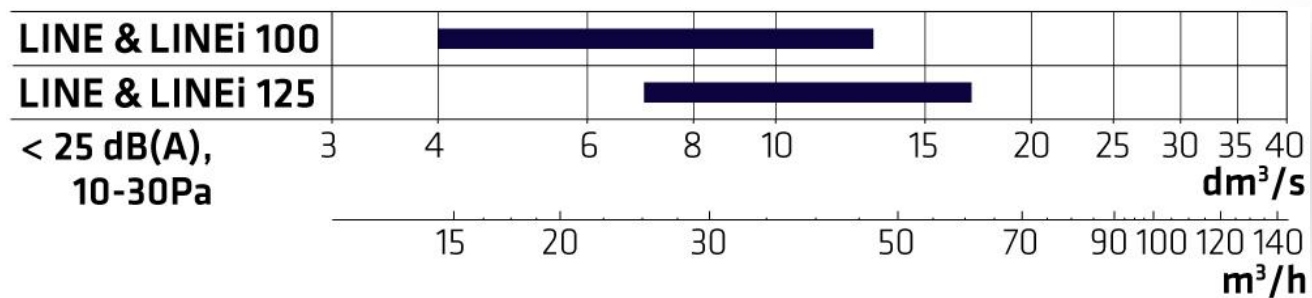
In the most common duct sizes for residential premises

Air flow direction with LINEd part

Deco part in round or square-shaped, in multiple material options

LINE

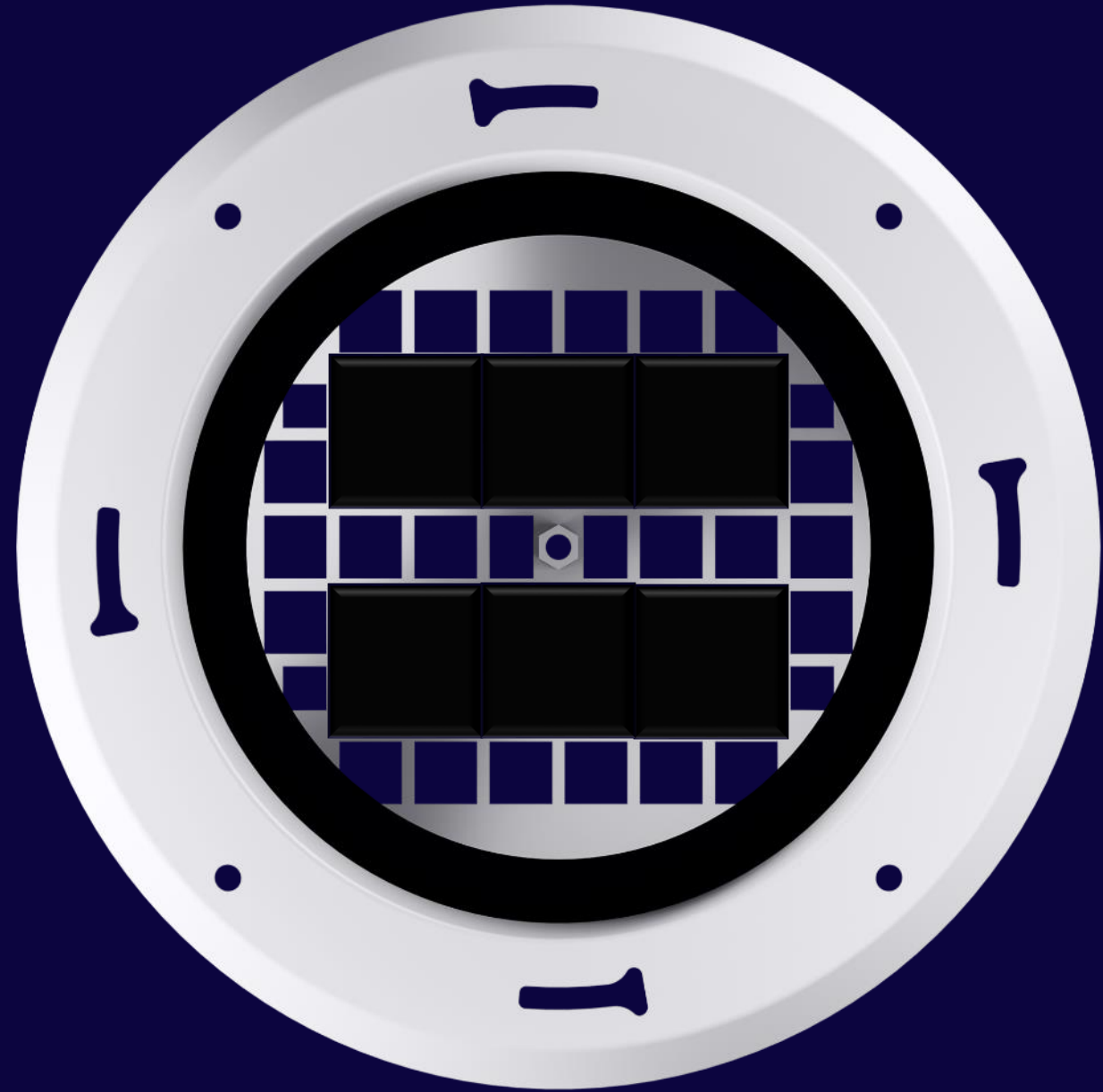
Quiet and draft-free ventilation



LINE

Accurate and reliable adjustment

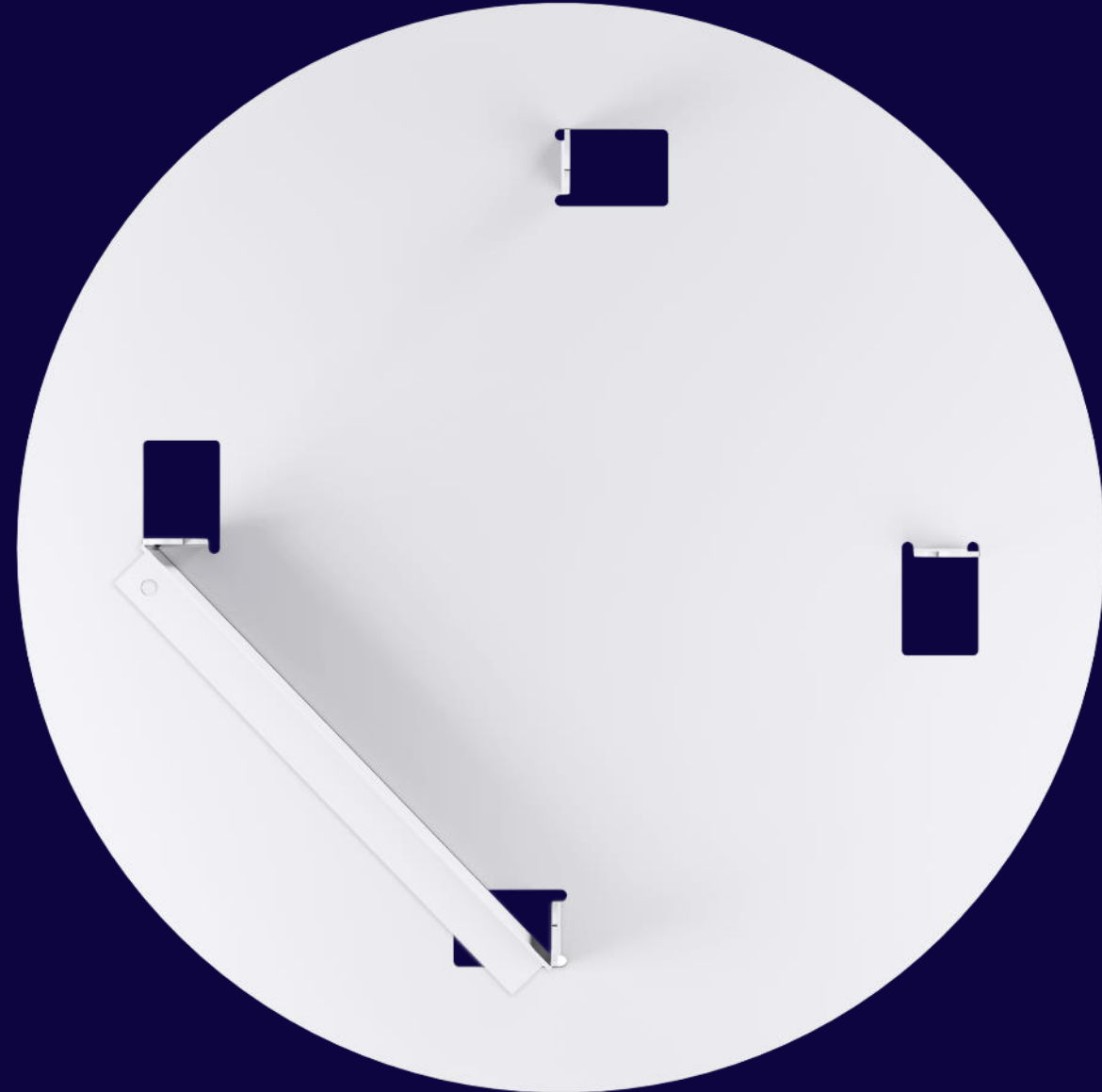
- Preadjustment of the device is conducted with 2x2 holes covering magnetic pieces
- The adjustment position has no significant effect on the throw-length



LINE

Direction of throw-pattern

- The throw-patterns can be directed into 180° or 270° with a separately ordered LINED direction part
- Enables placing the device into a corner or close to a wall
- The air flow of a wall installed supply air device can be directed towards the ceiling with LINED



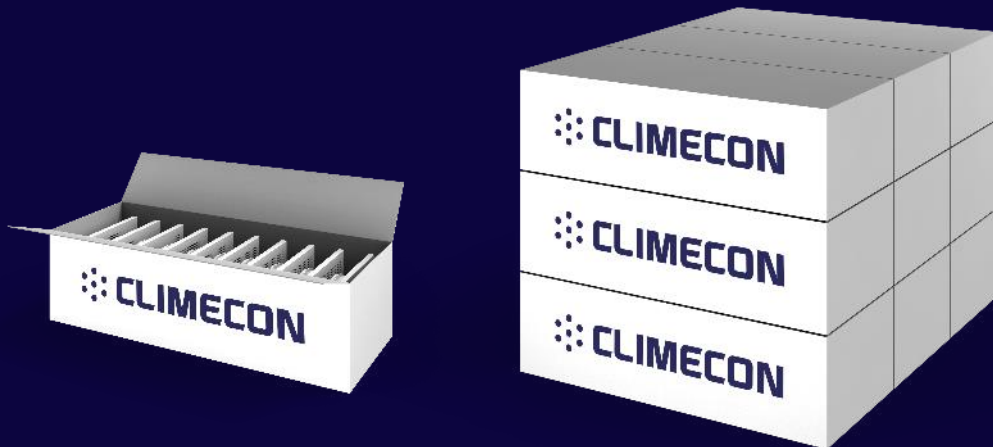
LINE

 **CLIMECON**



For all size projects

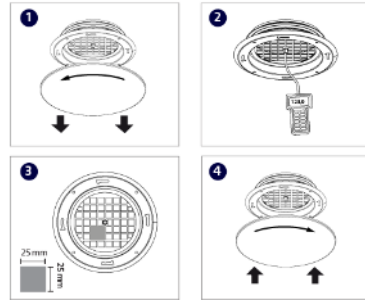
LINE is delivered in single or in 13 piece packages/shipments.




LINE 100



Säätöohje / Injustering / Adjustment /
Инструкция по настройке



$q_v = k \cdot x \cdot \Delta P_m$	k		$q_v = k \cdot x \cdot \Delta P_m$	k	
	LINE			LINEi	
 / kpl	0	3,14 4,48	0	3,40 4,90	
	1	2,73 4,05	1	2,89 4,55	
	2	2,31 3,70	2	2,52 4,10	
	3	1,96 3,41	3	2,14 3,80	
	4	1,59 3,04	4	1,78 3,40	
	5	2,72	5	3,04	
	6	2,44	6	2,68	

 CLIMECON

- RAL 9016 RAL 9005 Accoya
 Maitolasi Muu
 Opal-glass Other

A protective sheet is included

The sheet contains useful information for effortless installation. It also protects the valve surface during storing, shipment, and at the site.

LINE

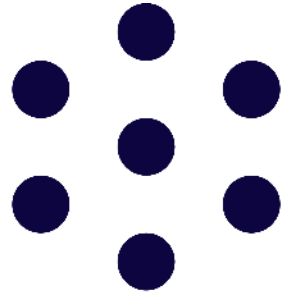


Quiet and draft-free
ventilation

LINE



High tolerancy of moist and water – suits bathrooms



CLIMECON

Thank you